

# Alaska Department of Fish and Game

Habitat Section  
Southeast Region



## 106-43-10590 Tributary 1

## ADDITION

**Water body name:**

**Quad:** Petersburg D-5

**Upper Reach Latitude:** 56.958313 **Longitude:** -133.491036

**Lower Reach Latitude:** 56.958742 **Longitude:** -133.490818

**Survey date:** 8/24/2023

**Species & Lifestage:**

**Survey crew:** CD, FC

**Findings:** We surveyed this uncataloged stream using a backpack electrofisher and GPS and captured juvenile coho salmon (Figure 1). The stream channel runs through the forest and is defined until an old beaver dam just upstream of waypoint 789 (Table 1; Figures 2, 3). The upstream beaver dam is likely a temporary barrier to juvenile fish passage.

**Recommendations:** Add this uncataloged stream to the anadromous waters catalog for rearing coho salmon (Figure 4).

**Nomination:** Pending

Table 1.—106-43-10590 tributary 1 survey data.

Waypoint	Latitude	Longitude	Notes	Stream Width ft	Stream Substrate	Habitat Features	Gradient %	Sample Effort	Sample Results
788	56.958711	-133.490862	At confluence of river-right tributary to addition-extent or cataloged stream. Small stream with low tannic water surrounded by encroaching moss-covered cut banks. Electrofishing upstream.	2-4	Small Gravel Fine Organic	Cut Banks	2-4	EF	3 DV
789	56.958272	-133.491000	1-yr CO capture just downstream of tiered beaver dam with some pond in above.	2-4	Small Gravel Fine Organic	Beaver Pond	2-4	EF	2 CO 1 DV 1 CT



Figure 1.—Juvenile coho salmon captured at waypoint 789.



Figure 2.—Tributary 1 at waypoint 798.



Figure 3.—Tributary 1 at waypoint 789.



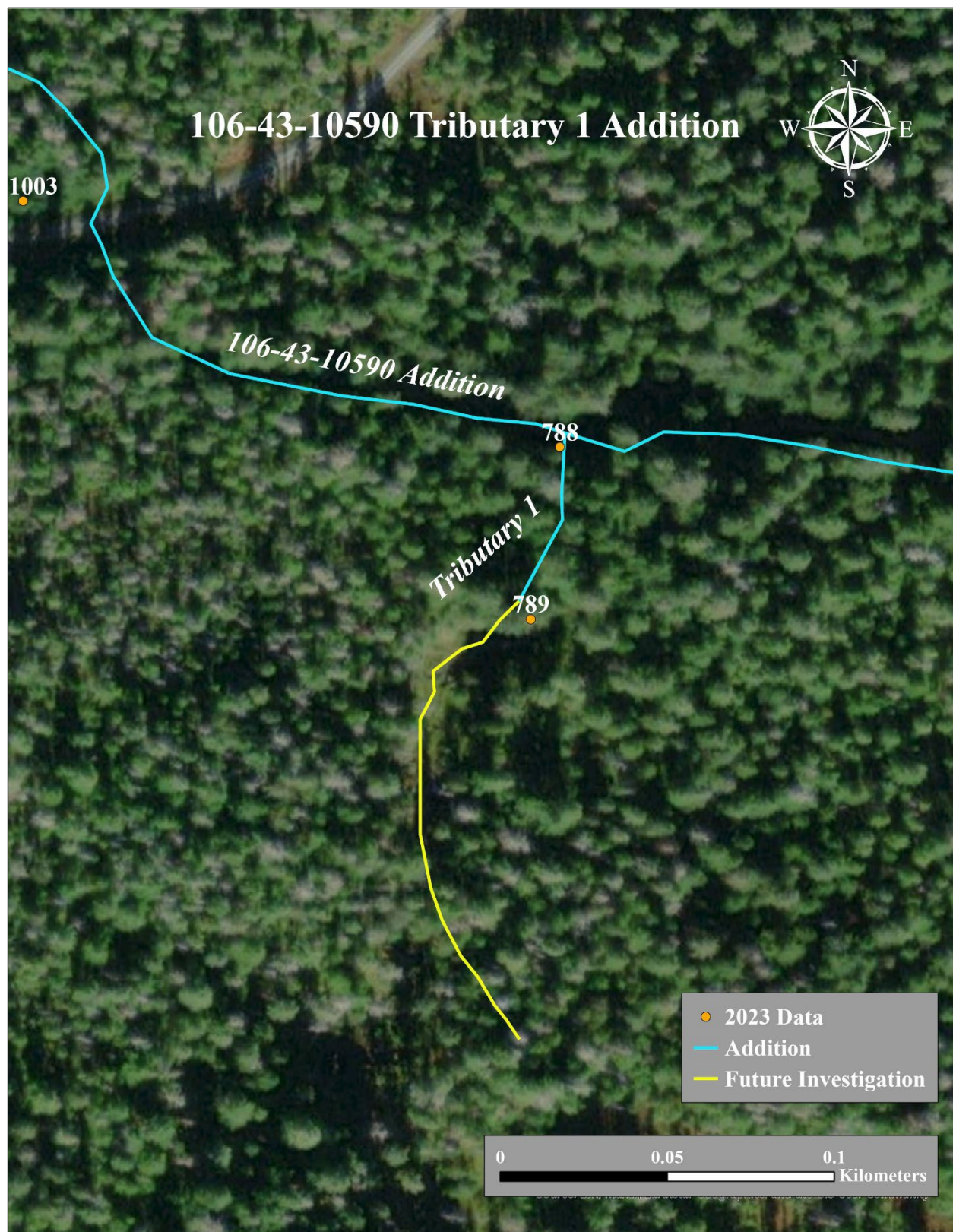


Figure 4.—106-43-10590 tributary 1 addition map.